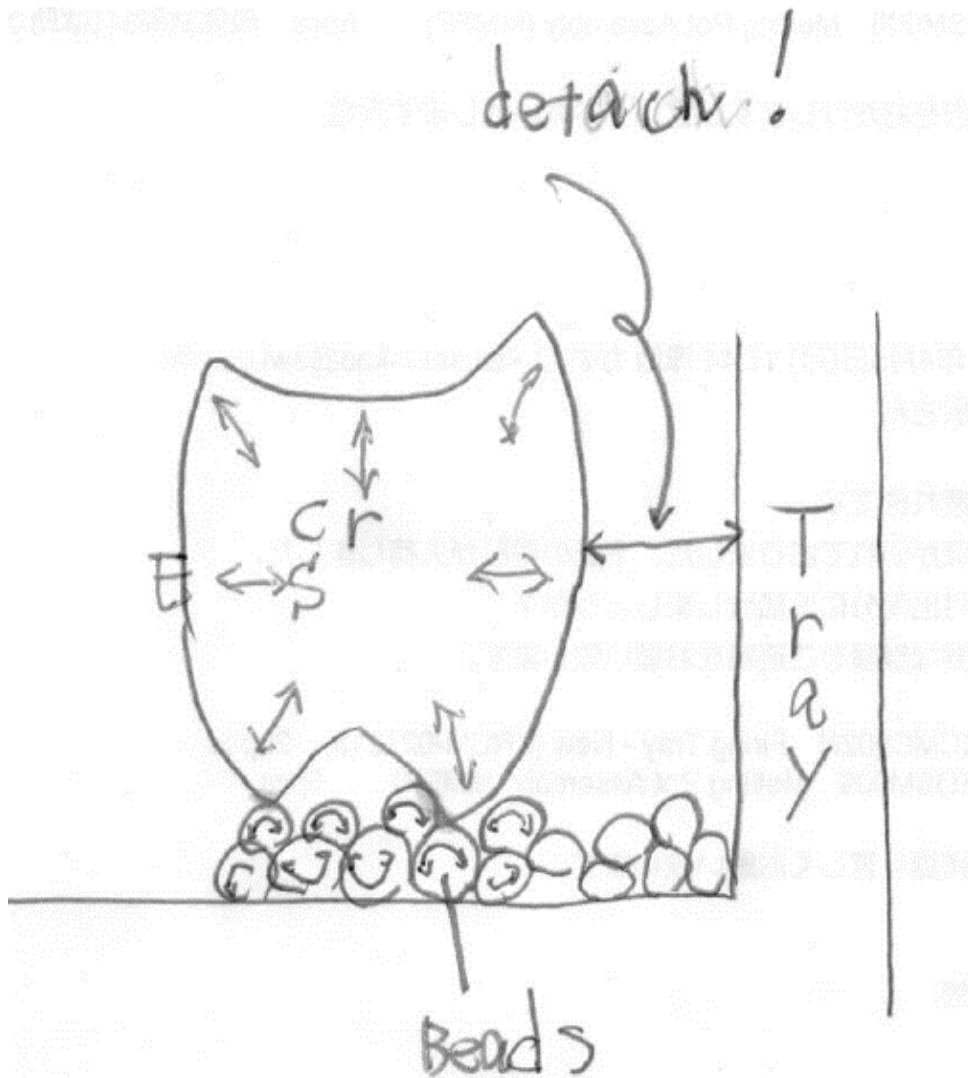


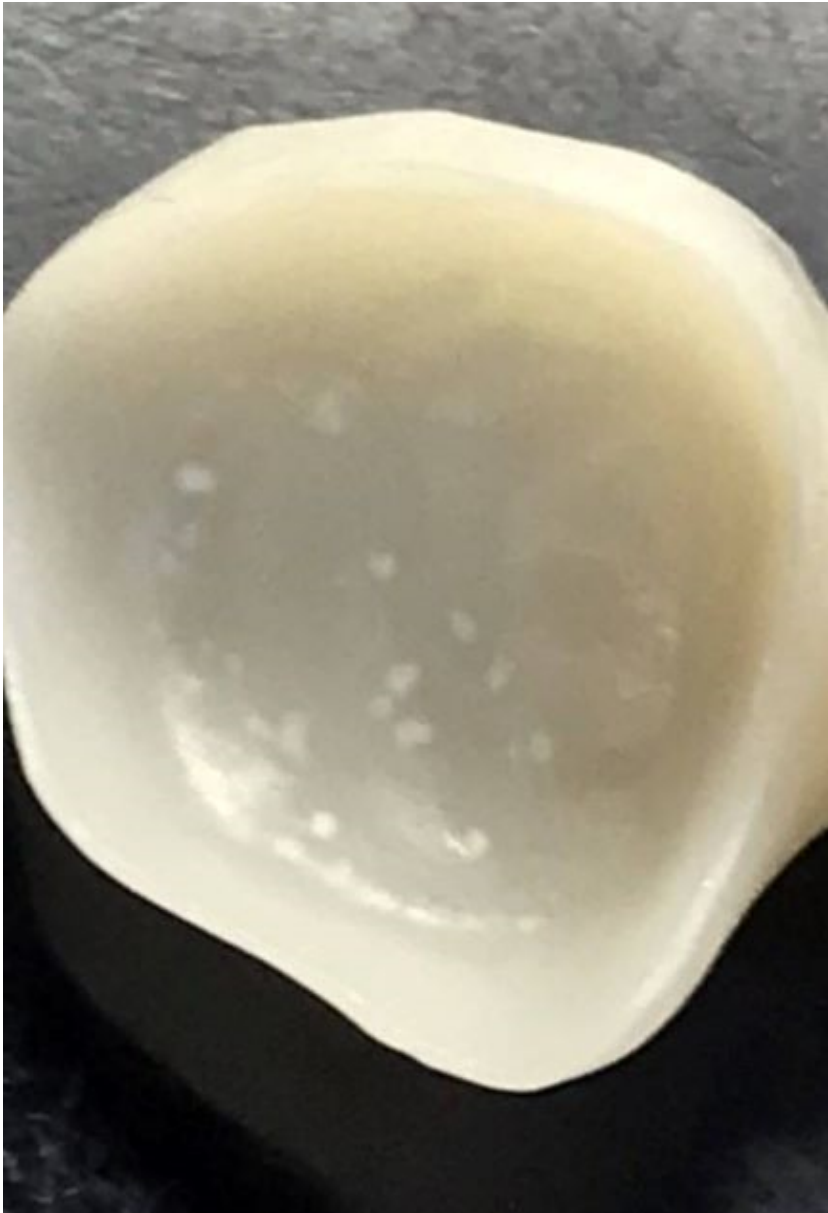
Zircon Beads works/Set up/ White Spots

1,How to work Zircon Beads



Zircon Beads works for prevent from zirconia teeth distortion(**E**xpand and **S**hrink) during sinterig. zirconia teeth should be **minimum contact area** for each surfaces. Because when its sintering, zirconia material will be expand and shrink. Therefore, between cusps and tray bottom have to **slide** with beads. **NOTE:** Please always set up zirconia crown marginal edges to **UPWARD**, cusps side to **DOWNWARD**.

In rare case, inside zirconia crown can be seen **white spots**. It means that is time to replace the new beads.



please order your dealers

order item code : **ZRCM021204** Firing Beads